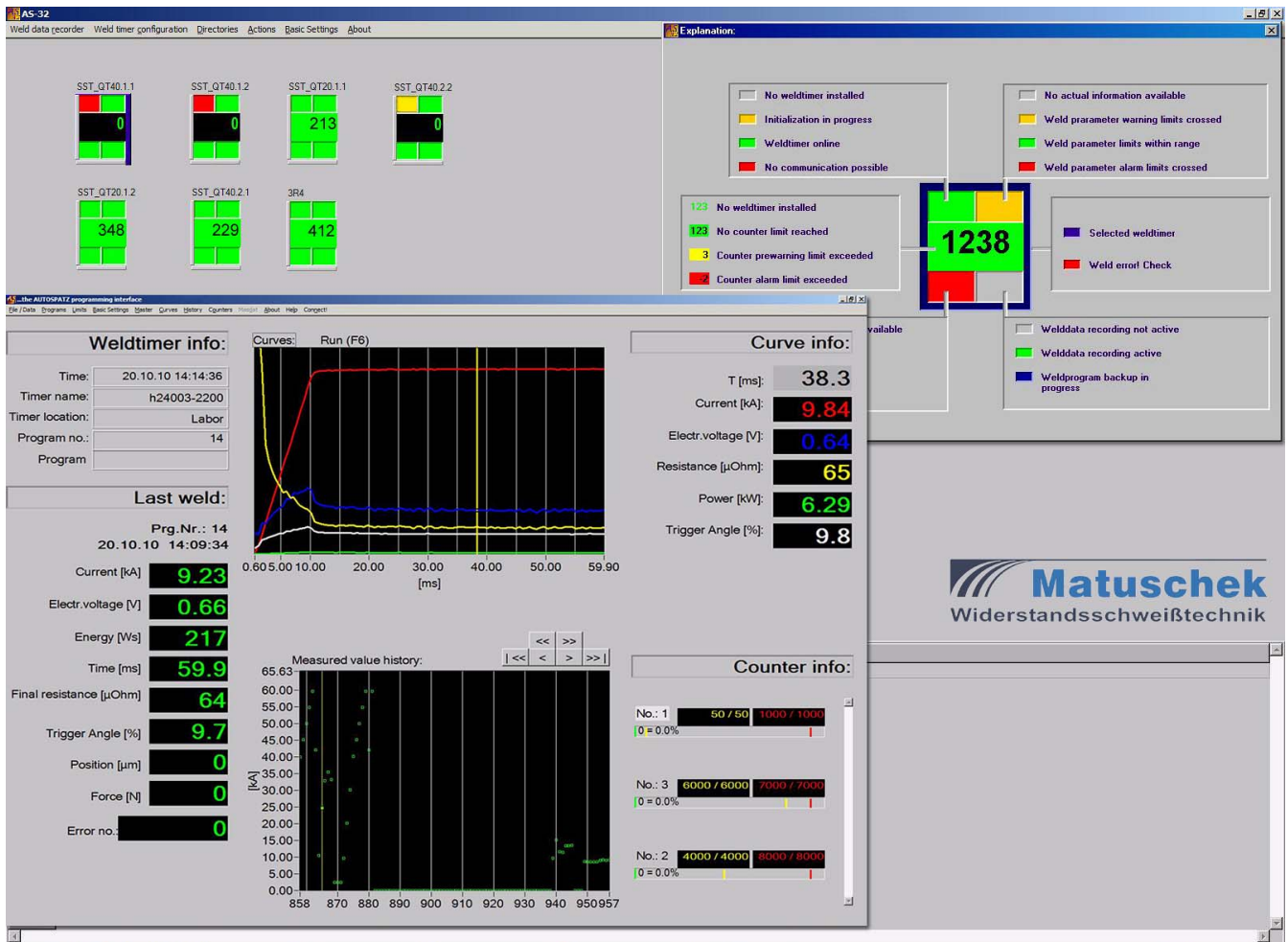


AutoSPATZAS-32 Line-PC Programming and Analysis Software



The *AutoSPATZAS-32* PC-Programming and Analysis software for the line-PC is a connecting link between production, quality control and process engineering. The software is designed for the simultaneous communication of a line-PC for up to 100 *AutoSPATZ*-welding timers via Ethernet and offers a broader scope of functions than the *AutoSPATZAS-01* software. With the *AutoSPATZAS-32* software, online weld parameter programming and analysis of the weldings are available for all connected *AutoSPATZ* and *SilverSPATZ* power sources.

On the well-structured graphic screen a real-time process map of all weld task is displayed. This includes display of the communication status between PC and weld timer, the crossing of parameter limits, the status of all electrode life and tipdress counters and alarm messages.

Through the graphic representation of curve characteristics in the process signals welding current, electrode voltage, welding power, electrode force, and electrode penetration and all the required weld parameter information needed for adjusting the welding parameters is provided to the weld expert.

The recorded values of the welds and the graphic representation of the measured value trends are valuable tools for operators and maintenance technicians to guarantee the weld spot quality.

The automatic backup feature permanently ensures that a complete copy of all actual weld programs and **MASTER** curves are stored in the line-PC.



If required, all weld data records from several *AutoSPATZes* and *SilverSPATZes* can be read online and stored on hard disk for later evaluation.

An off-line analysis of the weld data records with the **SPATZQS+** PC-quality assurance software or a standard program - e.g. spreadsheet program - illustrates the quality control the present process status and process development.

Functional Overview:

- Easy programming of all weld schedules and limit sets
- User-friendly editing of electrode life and tip dress counters with weld program designation
- Names assignable to every weld program
- Backup feature of weld schedules and **MASTER** reference curves, limit values, counter etc. for all connected *AutoSPATZ* power sources
- Automatic backup of welding schedules and **MASTER** curves for all connected *AutoSPATZ* timers
- Compilation and display of a protocol where changes of the weld timer programming are saved
- Permanent display of electrode life and tip dress counter status for all connected *AutoSPATZ* power sources
- Permanent display and automatical storage of the fault protocol of errors for all connected *AutoSPATZ* power sources
- Permanent display of parameter crossing (warning and action limits) for all connected *AutoSPATZ* power sources
- Error diagnosis with text messages
- Storing of all weld data records on hard disk for offline analysis if required
- Display of all process signals measured values for the last weld
- Onscreen graphic representation of measured value trends for the last 100 welds
- Display of measured value trends for the last 10,000 welds through a scroll function
- Online statistic for stored weld data with spot based splash analysis, average time extension etc.
- Firmware update of all connected weld timers via Ethernet
- First programming of the connected weld timers in data file: first data import
- Password access protection and administration of up to 7 user levels (optional)

System Requirements:

- CPU Pentium IV, 2 GHz, 1 GB RAM
- VGA graphics card with a resolution of 1,024 x 768 or higher
- Network connection with Ethernet 10 Base-T
- Operating system Microsoft Windows XP or Windows 7

