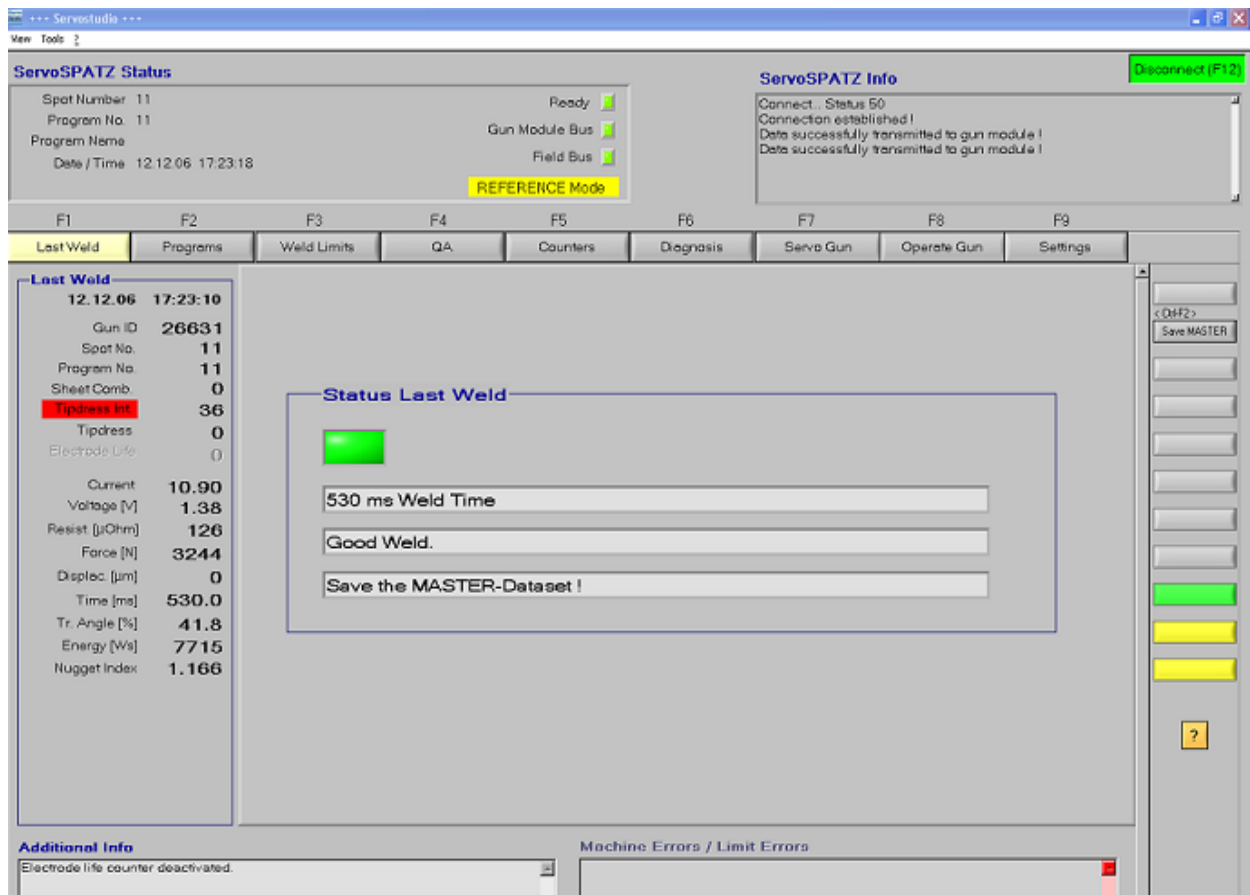


ServoSTUDIO PC Programming and Analysis Software



The offered, functional scope of the **ServoSTUDIO** software for PCs exceeds the normal performance characteristics of a standard programming unit and is the connecting link between production, quality control and process engineering. The software is used for the local programming and analysis of a single welding controller via a RS232 connection.

The **ServoSTUDIO** software has full online functionality. This includes the display of the electrode life counters and the alarm messages and also the editing of welding parameters for the connected welding controller. All welding programs and **MASTER** curves can subsequently be up/downloaded to/from the connected welding controller. It is also possible to update the firmware for the welding controller.

The **ServoSTUDIO** PC software also allows the off-line QS analysis of the welding process data – the last 8,000 welds, which are downloaded from the

ServoSPATZ controller. These data contain the complete process parameters for each individual welding. The analysis of all data can be carried out in selected intervals. That means that the welding process data can be evaluated in time intervals of several seconds up to months or years, or in quantities of single welds up to tens of thousands of welds.

The scope of the assessment intervals allows the identification of factors and correlations which, so far, went unnoticed. For documentation purposes, a print-out of the complete analyses is possible. Additional comments may also be entered to the analysis data in a special input field. It is possible to draw up quality control tables of all welding process data for the statistical process control (**Statistical Process Control, SPC**). In addition to the analysis of the total welding data quantity it is also possible to carry out independent analyses for each welding program.



Functional Overview:

- Easy programming of all weld schedules and limit sets
- Display of all process signals measured values for the last weld
- Transfer of 8,000 weld data records stored in the timer to a hard disk for offline analysis
- Onscreen graphical representation of measured value trends for the last 100 welds
- Representation of the log file with the last 50 events
- User-friendly editing of the tip life, dress and spot counters with weld program designation
- Error diagnosis with text messages
- Graphical status bar for all counters
- Programming of all connected **ServoSPATZ**
- Download of backups from PC to **ServoSPATZ**
- Backup of all parameters to hard disk
- Firmware update of **ServoSPATZ** power sources
- Access protection via password or dongle
- Administration of up to 7 user levels

System Requirements:

- CPU Pentium IV, 2 GHz, 1 GB RAM
- VGA graphics card with a resolution of 1,024 x 768 or higher
- Operating system Microsoft Windows XP or Windows 7
- RS232 Interface

