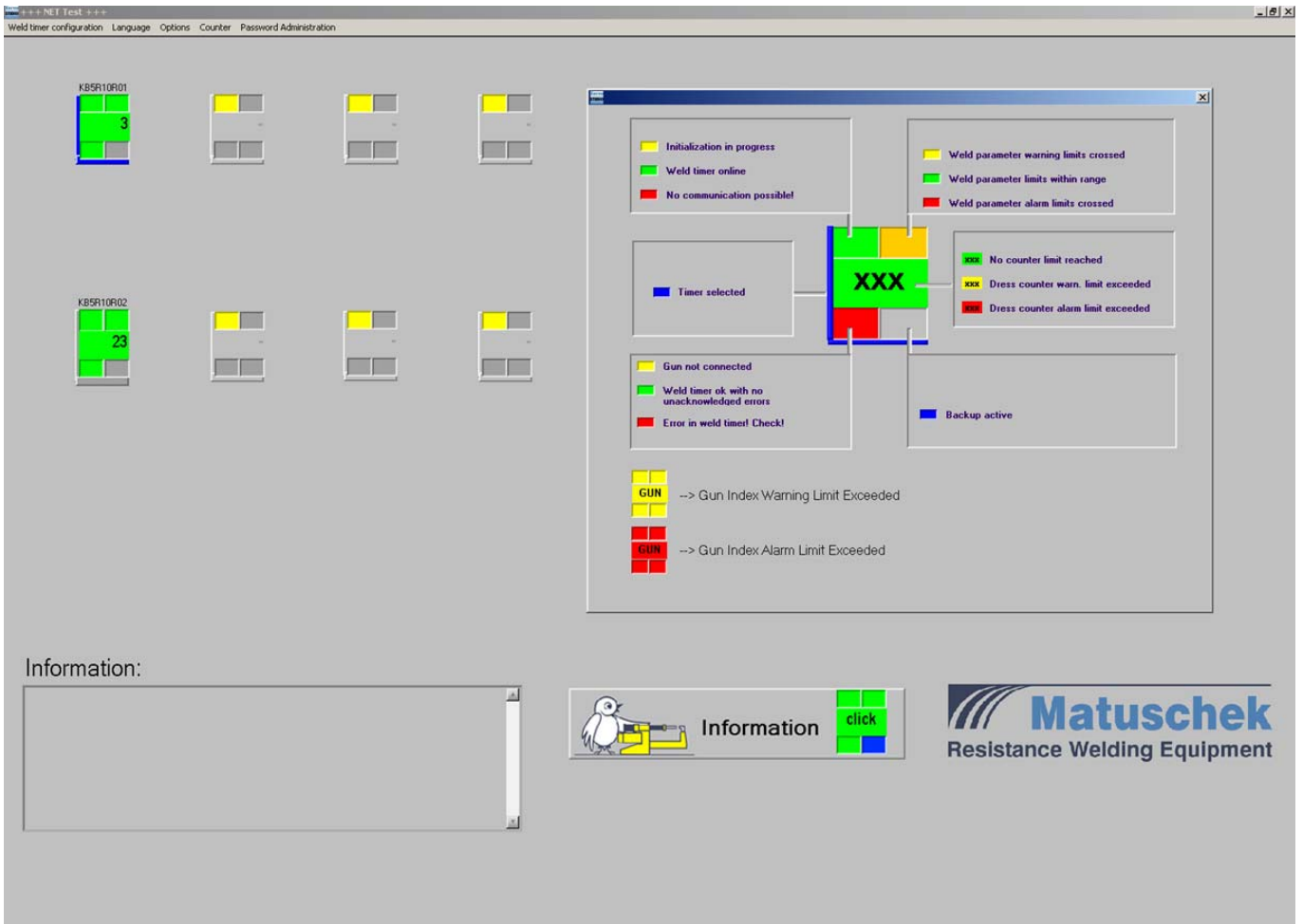


*ServoSTUDIONET Line-PC Programming and Analysis Software*



The **ServoSTUDIONET** software for the line PC and Windows XP and Windows 7 - operating system communicates via Ethernet with up to 100 welding controllers and offers a larger selection of functions than the **ServoSTUDIO** software which is completely integrated into the **ServoSTUDIONET** software.

Like the **ServoSTUDIO** software, this software has full online functionality. This includes the display of the electrode life status and the alarm messages for all connected weld controllers in a window and also the display and the editing of

welding parameters for each connected welding controller. All welding programs and **MASTER** curves can subsequently be up/downloaded to/from each connected welding controller. The automatic creation of backup files guarantees that a complete copy of all actual welding programs and **MASTER** curves is stored in the line PC memory.

There is, if requested, also the possibility to record uninterruptedly the welding data of selected controllers.



## Functional Overview:

- Easy programming of all weld schedules and limit sets
- Display of all process signals measured values for the last weld
- Permanent display of dress counter for all connected **ServoSPATZ** power sources
- Permanent display of parameter crossing (warning and action limits) for all connected **ServoSPATZ** power sources
- Onscreen graphical representation of measured value trends for the last 100 welds
- Transfer of 8,000 weld data records stored in the timer to a hard disk for offline analysis
- Error diagnosis with text messages
- Representation of the log file with the last 50 events
- User-friendly editing of the tip life, dress and spot counters with weld program designation
- Graphical status bar for all counters
- Programming of all connected **ServoSPATZ**
- Download of backups from PC to **ServoSPATZ**
- Backup of all parameters to hard disk
- Firmware update of **ServoSPATZ** power sources
- Access protection via password or dongle
- Administration of up to 7 user levels

## System Requirements:

- CPU Pentium IV, 2 GHz, 1 GB RAM
- VGA graphics card with a resolution of 1,024 x 768 or higher
- Operating system Microsoft Windows XP or Windows 7
- Network connection with Ethernet 10Base-T

